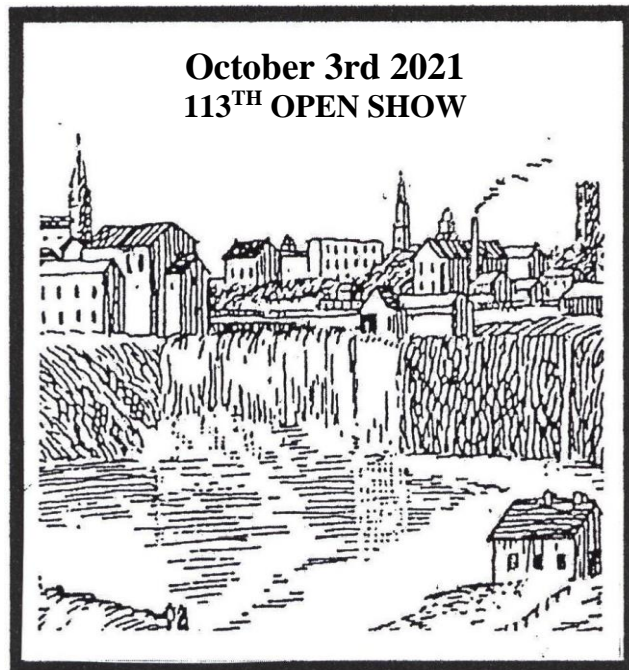


ROCHESTER POULTRY ASSOCIATION



**GENESEE COUNTRY VILLAGE & MUSEUM
MUMFORD, NEW YORK**

Awards

*CASH

\$35 to the exhibitor who coops in the highest number of entries

\$25 to the exhibitor who coops in the second highest number of entries

Awards will be split equally in event of ties

* CUSTOM POTTERY crafted in 19th century tradition by Artist and Museum Master Potter Mark Presher
Awarded to:

CHAMPION and RESERVE: Large Fowl ~ Bantam ~ Waterfowl

CHAMPION & RESERVE:

American Asiatic English Mediterranean Continental All Other Standard
Modern Game Bantam Game Bantam SCCL Bantam RCCL Bantam AOCCL Bantam FL Bantam
Bantam Duck Large Duck Goose Turkey Guineafowl (Don Perrin Memorial)

*ARTHUR SCHALLENBERG MEMORIAL AWARD

16 inch Mark Presher Stoneware PLATTER to GRAND CHAMPION of the SHOW

(All standard and bantam chickens, waterfowl, turkeys and guineaowl competing)

Offered by D.H.S. Wehle to honor the memory of Art Schallenberg

Breeder, Stringman, Judge, Teacher, Friend

*SPECIALS OFFERED BY:

ROCHESTER POULTRY ASSN.

\$5 Best Silver Appleyard
\$5 Best Runner
\$5 Best East Indie
\$5 Best China
\$5 Best Khaki Campbell
\$5 Best Modern Game
\$5 Best Call
\$5 Best Silkie
\$5 Best d'Anvers
\$5 Best Welsh Harlequin
\$5 Best Rouen
\$5 Best Belgian d'Uccle
\$5 Best Muscovy
\$5 Best Cochin
\$5 Best O. E. Game
\$5 Best Wyandotte
\$5 Best Langshan
\$5 Best Embden
\$5 Best Hamburg
\$5 Best Cornish
\$5 Best Turkey
\$5 Best KO Shamo

TWIN TIER POULTRY CLUB

\$5 Best Leghorn
\$5 Best Cayuga
\$5 Best Egyptian Goose
\$5 Best Pomeranian
\$5 Best Tufted Roman

BUFFALO & WESTERN NY

\$5 Best Plymouth Rock
\$5 Best Orpington
\$5 Best African
\$5 Best Pilgrim
\$5 Best Brahma

BOB BERKEMEIER

\$10 Best Large or Bantam Buttercup
\$10 Best Large or Bantam Light Brown Leghorn in memory of Larry Bush
\$10 Best Guineafowl in memory of Don Perrin
\$10 Best Buff Large, Bantam or Waterfowl in Memory of Harry Claus
\$10 Best Large or Bantam Andalusian
\$10 Best Large Rhode Island Red in Honor of Harold Knapp
\$10 Best Bantam Rhode Island Red
\$10 Best Large or Bantam Ancona

LEWIS FAMILY

\$10 Best Sebastopol
\$10 Best Large Brahma
\$10 Best Pekin
\$10 Best Large Cochin
\$10 Best Turkey
\$10 Best Crested Duck
\$10 Best Speckled Sussex

HAROLD KNAPP

\$5 Best Large Ameraucana
 \$3 Reserve Large Ameraucana
 \$5 Best Bantam Ameraucana
 \$3 Reserve Bantam Ameraucana
 \$5 Best Large R.I. Red
 \$3 Reserve R.I. Red
 \$5 Best Bantam R.I. Red
 \$3 Reserve Bantam R.I. Red

DAN & MARIETTA SCHUTH

\$10 Best Black Hamburg Bantam
 \$10 Best BB Red Large Modern Game
 \$10 Best Embden
 \$10 Best Crele O.E. Game Bantam
 \$10 Reserve B.B. Red O.E. Game Bantam

GORDON MASON

\$10 Best Polish
 \$5 Best Saxony
 \$5 Best Sumatra
 \$5 Best Tufted Roman

THANKS TO THE FOLLOWING CLUBS PLACING MEETS WITH US

(Full list of meets received post publication will be posted in the Show Hall):

APA Club Meet

ABA Special Meet

International Waterfowl Breeders Association Special Meet

Old English Game Bantam Club of America Special Meet

Hamburg Club of North America State Meet

Western New York Pheasant and Waterfowl Association Annual Meet* Classes adopt APW standards as follows:

Geese: Brown, Grey, Black; **Ducks:** Wood Duck, Mandarin, Teal, AOV, Diving, Dabbling;

Pheasants: Longtails and Ruffed

Ribbon or Rosette presented to Class Champions. Cash awards in each category awarded when 3 or more competing: 1st \$5; 2nd \$4; 3rd \$3 (Young, Old, Gander, Hen judged together).

WNYP&W offers Grand Champion plaques as follows: Warren Mack Memorial Award for Grand Champion Pheasant; Jim Keyes Award for Champion Wild Waterfowl; Ethelyn Clark Memorial Award for Champion Youth Waterfowl; Francis and Alice Gerling Award for Champion Youth Pheasant.

Rochester Poultry Association offers: **\$10 Best Wild Goose**

Bob Berkemeier offers: **\$20 Best Pheasant in Memory of Warren Mack**

Terry Strobel offers: **\$10 Best Wild Duck**

*All Rochester Poultry Association Open show fees and rules apply to all bird entries for WNYPW meet.

**MANY THANKS TO GENESEE COUNTRY VILLAGE & MUSEUM
 FOR HOSTING OUR SHOW**

We hope you join us to compete and enjoy the day in this unique, lively and engaging venue. Genesee Country Village and Museum is a 19th century educational living history museum, and so much more, in Mumford, New York, just southwest of Rochester. It is the largest living history village in New York State, and one of the largest in the nation. Our show is part of the Museum's annual 19th century style Agricultural Society Fair during the Fall Festival. Enjoy a virtual tour at: www.gcv.org. You'll be amazed!

ALL YOUTH SHOW
SATURDAY, October 2nd, 2021

BIRDS MUST BE COOPED BY 9:00AM. Showroom opens at 7:15am. Judging starts at 9:30am

YEPA Sanctioned SHOWMANSHIP will begin at 9:30am. Sign up on Entry Form

Youth Show Secretary: Robin Lewis 16818 Ridge Rd., Holley, NY 14470

Phone: 585-353-6810 email: rochesterpoultry@gmail.com

Poultry Judge: Paul Kroll **Showmanship Judges:** Dan Schuth and Harold Knapp

Who can show? Anyone 5 years old through 18 years old

Entry fees? ***\$3.00 per bird if you enter 1 to 14 birds; \$2.50 if you enter 15 or more birds Payment must be included with entry form to Youth Show Secretary (Robin Lewis)

Can I enter the same birds in Open Show on Sunday?

***Yes, you can enter the same birds in the Open Show on Sunday at no additional cost (there will be no reference to youth status in the Open competition). *** Fill out an Open Show entry form and send to Colleen Lewis, 1683 Oak Orchard Rd., Albion, NY 14411.

RULES: All Open Show rules stated in this catalog also apply to the Youth Show.

AWARDS: ROCHESTER POULTRY ASSOCIATION OFFERS FOR YOUTH:

CASH: \$20 and rosette to each: Champion Large Chicken; Bantam Chicken; Waterfowl

\$10 and rosette to each: Reserve Champion Large Chicken; Bantam Chicken; Waterfowl

\$5 Best of Class as follows: American, Asiatic, English, Mediterranean, Continental, All Other Standard Bred; Modern Game Bantam, Game Bantam, Single Comb Clean Legged Bantam, Rose Comb Clean Legged Bantam, All Other Combs Clean Legged Bantam, Feather Legged Bantam; Heavy Goose, Medium Goose, Light Goose; Heavy Duck, Medium Duck, Light Duck, Bantam Duck; Turkey; Guineafowl

A Minimum of 5 birds must be shown in the class for RPA best and reserve cash prizes to be awarded

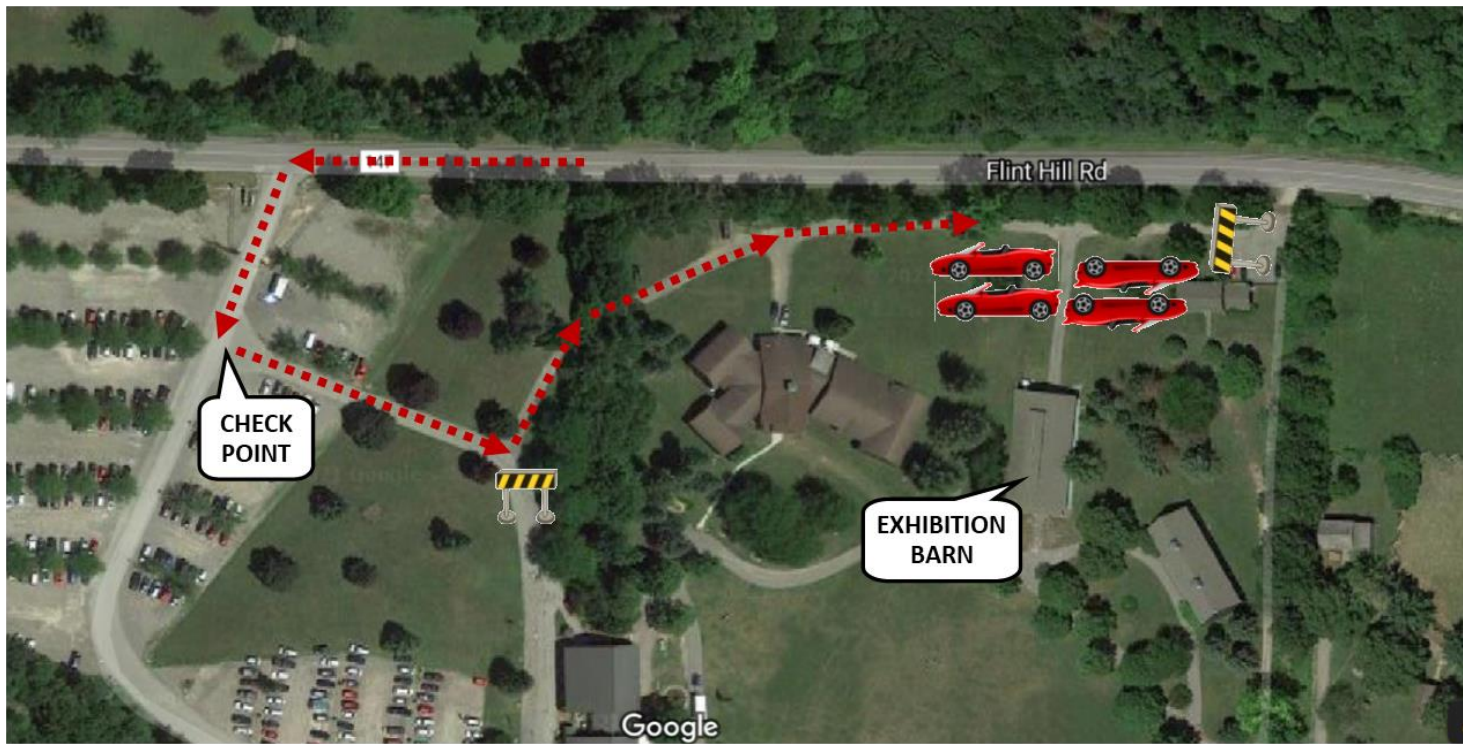
Ribbons to 5th place (Youth Show Only)

SPECIALS:

LEWIS FAMILY OFFERS:	\$5 Reserve of Class for large and bantam chicken, turkey & guineafowl \$5 Each Showmanship Class 3 rd Place; \$10 Champion Large Duck
FERGUSON FAMILY OFFERS:	\$5 Reserve of Class for waterfowl classes
BOB BERKEMEIER OFFERS:	\$20 Each Showmanship Class Champion
LINDA FITZGERALD OFFERS:	\$10 Each Showmanship Class Runners-up, \$5 Best Speckled Sussex \$5 Best Lg. Cochin, \$5 Best Lg. Andalusian, \$5 Best Cayuga, \$5 Best Appleyard, \$5 Best Pekin, \$5 Best Lg. Brahma
FISHER FAMILY OFFERS: (In Memory of Dean Fisher)	\$10 Youth Exhibitor entering the most classes \$5 Champ Large Chicken, \$5 Champ Bantam Chicken, \$5 Champ Goose
TERRY STROBEL OFFERS:	\$20 Best Bantam Duck
SCHUTH FAMILY OFFERS:	\$10 Champion Goose
DUFF WEHLE OFFERS: (In Memory of Robert L. Burk)	\$25 Grand Champion of the Youth Show \$15 Reserve Grand Champion of the Youth Show \$25 Overall Showmanship Champion \$10 Overall Showmanship Champion Runner-up \$10 Youth Exhibitor who displays exceptional Citizenship \$5 Each First Time Youth Exhibitors showing five or more birds

*Send Saturday Youth Show entries to Robin Lewis

*Send Sunday Open Show entries to Colleen Lewis



ROUTE TO ENTER THE MUSEUM, GO THROUGH THE CHECK-IN POINT TO RECEIVE PASSES, GET TO THE EXHIBITION BARN TO PARK AND COOP IN YOUR BIRDS. CHECK- IN POINT WILL BE OPEN AT 7:15am SATURDAY AND SUNDAY.